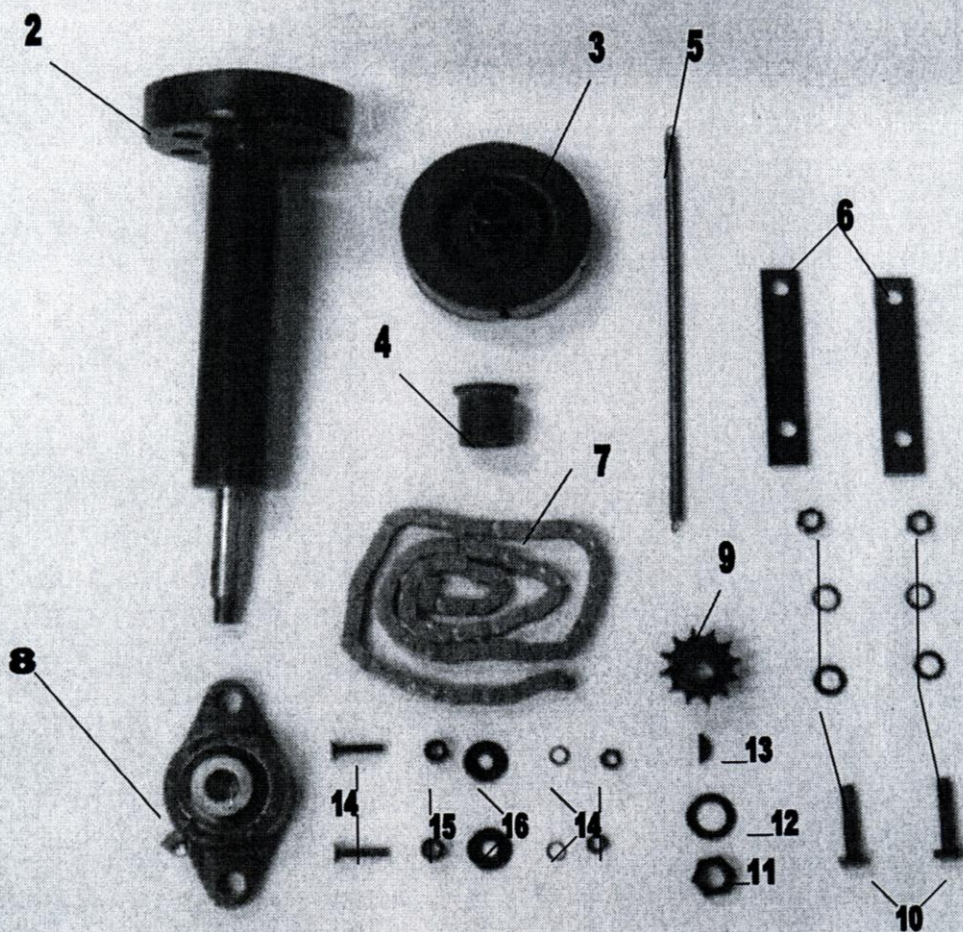
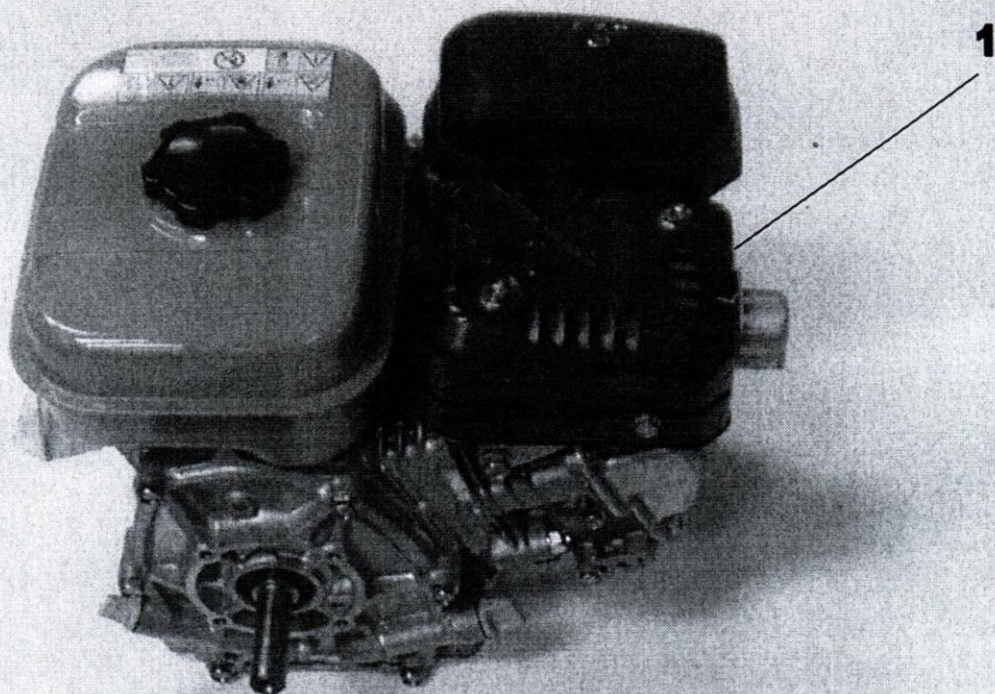


# GOLF CHASSIS

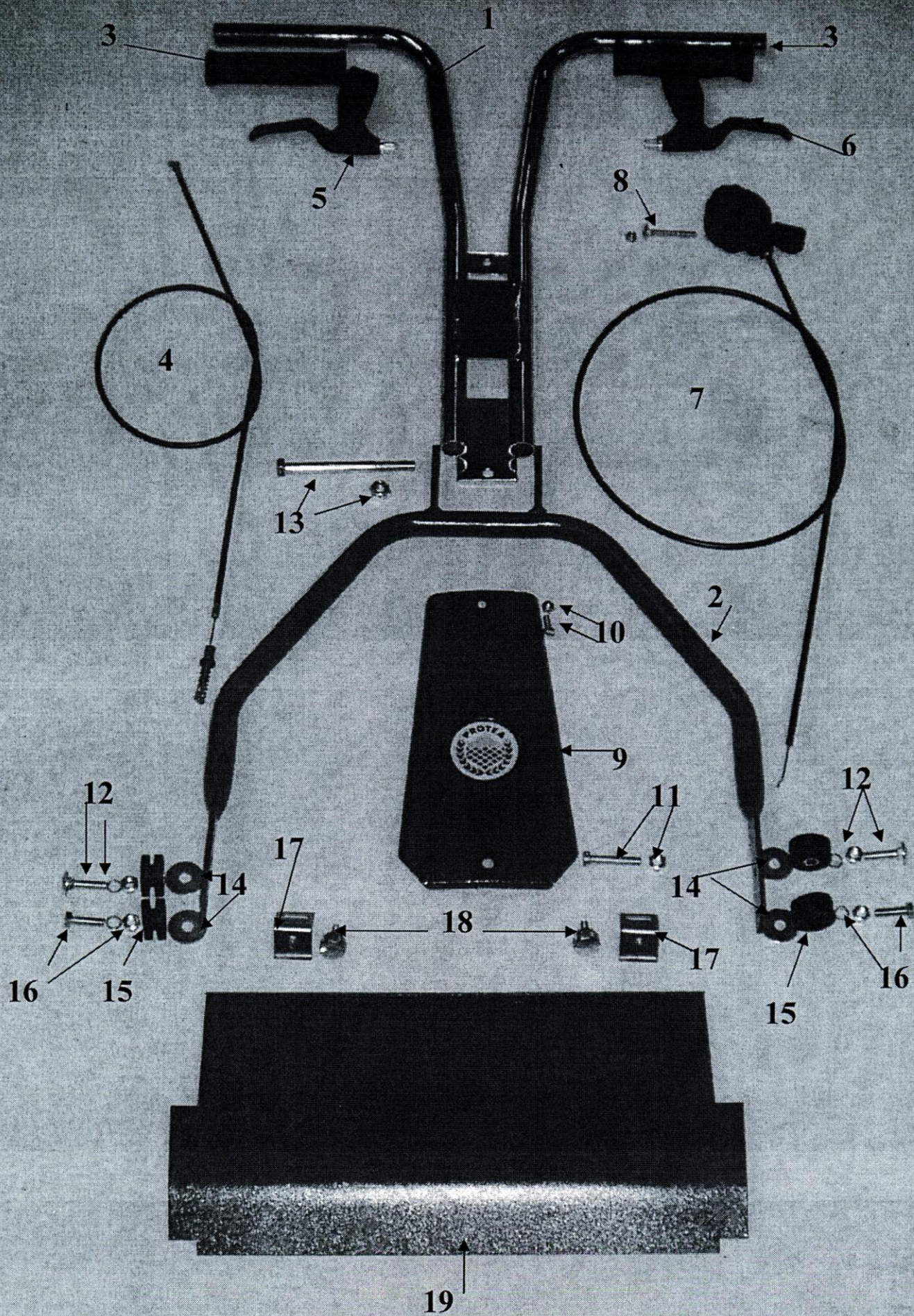
FIG	ILLUS NO	DESCRIPTION	PART NO
1	1	MOWER FRAME LH	455699
1	2	GRASSBOX SUPPORT RUBBER WITH M8 X 30 CUP SQUARE/NUT	453085
1	3	CHAIN COVER	455778
1	4	CHAIN CASE MOUNTING SCREWS + M6 X 14 CHEESE HEAD SCREW	1191908
1	5	510 GRASSBOX ASSY	451290
1	5	630 GRASSBOX ASSY	458065
1	6	510 ENGINE TABLE	451339
1	6	630 ENGINE TABLE	459170
1	7	MOWER FRAME RH	455706
1	8	GRASSBOX ANTIVIBRATION MOUNTS	458085
1	9	SLOT COVER (NOT SHOWN)	458080
1	10	510 TEASING RAKE BRUSH	458141
1	10	630 TEASING RAKE BRUSH	458142
1	11	TEASING RAKE ASSY	458109
1	11	630 TEASING RAKE ASSY	458108
1	12	CLUTCH COVER	3500505
1	13	CLUTCH COVER SEAL	458150
1	14	TEASING RAKE BRUSH M6 X 25 C.S.K SCREWS/NUTS	Universal
1	15	TEASING RAKE BRACKET M6 X 25 CUP SQUARES/NUTS	Universal
1	16	FRAME M8 X 20 SCREWS/NUTS	Universal
1	17	CHAIN COVER STUD (NOT SHOWN)	458170
1	18	GRASSBOX HANDLE	459270
1	19	CHAIN COVER PLUG (FOR BACKLAPPING)	459463
1	20	CLUTCH COVER GROMMET, NOT SHOWN	2724510





GOLF ENGINE			
FIG	ILLUS NO	DESCRIPTION	PART NO
2	1	ENGINE 4 1/2 HP	6200050
2	2	CENTRIFUGAL CLUTCH SHAFT (KEYWAYED FOR 12T)	458168
2	3	CENTRIFUGAL CLUTCH BODY	6200450
2	4	CENTRIFUGAL CLUTCH SHAFT OIL LITE BUSH	3115997
2	5	CENTRIFUGAL CLUTCH TENSION SPRING	458040
2	6	ENGINE PACKING FOR ROBIN EY20 (NOT APPLICABLE TO EU MODELS)	458102
2	7	CUTTER CHAIN 3/8, WITH SPROCKET, 82 ROLLERS,06B	2984591
2	8	CLUTCH SHAFT BEARING UCFL202-15, 82 ROLLERS	1121200
2	9	CLUTCH SPROCKET 12T	453990
2	10	HEX BOLT M8 X 45	Universal
2	11	NUT 1/2" UNF	Universal
2	12	M12 WASHER	Universal
2	13	WOODRUFF KEY NO 6	3802051
2	14	M6 X 25 COUNTER SUNK SCREWS	Universal
2	15	PILLOW BLOCK SPACING	458048
2	16	M6 X 22 X 2 FLAT WASHER	Universal
2	17	CUTOUT SWITCH FOR DEADMAN LEVER (NOT SHOWN)	1673000
2	3	CENTRIFUGAL CLUTCH SHAFT FOR 9T SPROCKET	458168
2	7	CUTTER CHAIN FOR 12T SPROCKET	2984806
2	9	CLUTCH SPROCKET 9T	453989
2	9	CUTTER CHAIN FOR 12T SPROCKET 12T/26	2984593



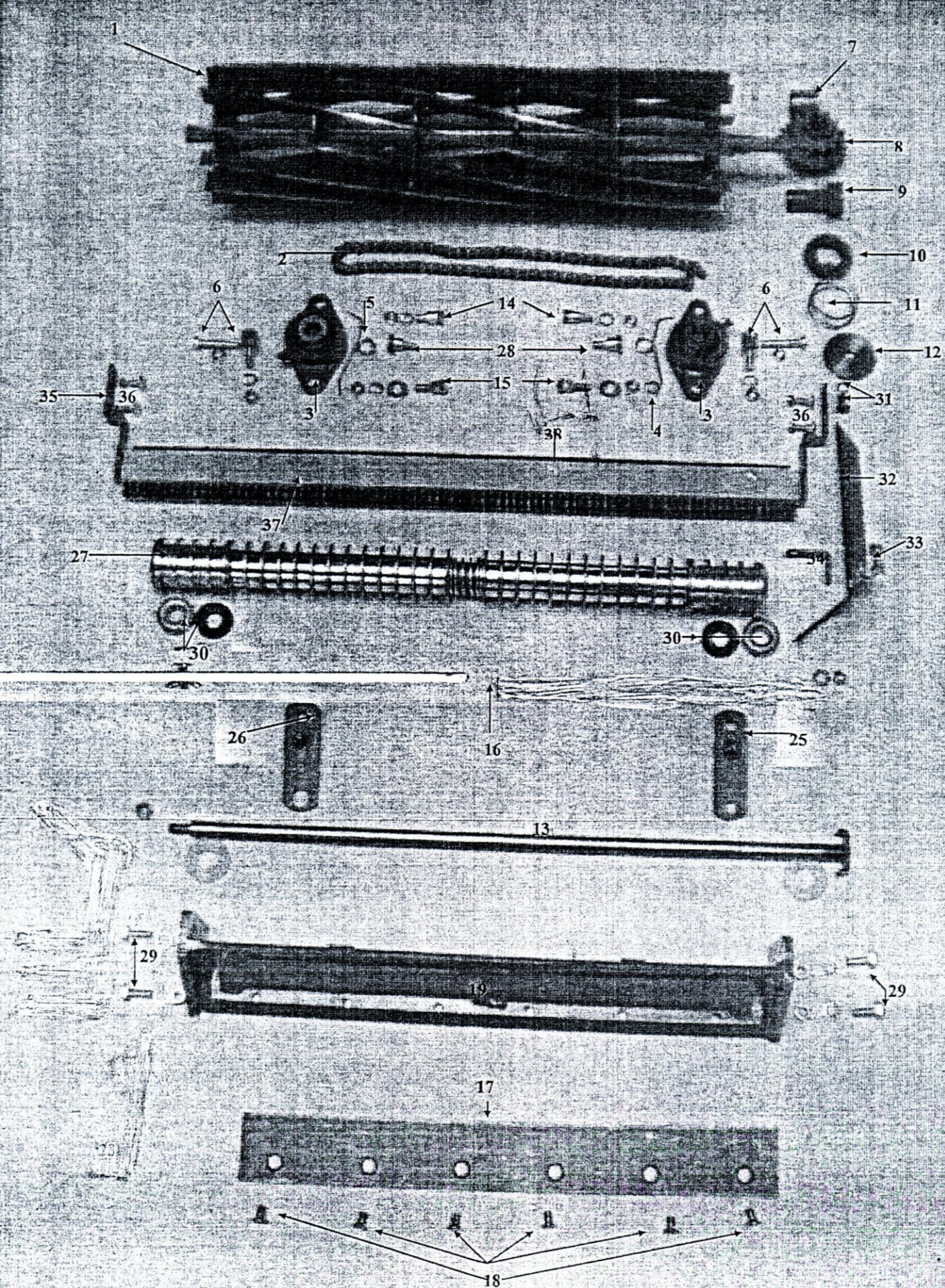




# GOLF HANDLE ASSY

FIG	ILLUS NO	DESCRIPTION	PART NO
3	1	UPPER HANDLE ASSEMBLY	456377
3	2	510 LOWER HANDLE ASSEMBLY	458026
3	2	630 LOWER HANDLE ASSEMBLY	458095
3	3	HANDLE GRIP	1851071
3	4	LUTCH WIRE ASSEMBLY	451242
3	5	RH DEAD MAN LEVER	403013
3	6	LH CLUTCH LEVER	403012
3	7	THROTTLE WIRE ASSEMBLY	459120
3	8	CUPSQUARE M8 x 45 NUTS/SPRINGWASHER	Universal
3	8	HANDLE GROMMET - (NOT SHOWN)	2721950
3	9	COVER PLATE ASSEMBLY	453739
3	10	BOLT M6 x 15 NUT/SPRINGWASHER	Universal
3	11	BOLT M8 x 40 + NUT/SPRINGWASHER	Universal
3	12	CUPSQUARE M8 x 30 + NUT/SPRINGWASHER	Universal
3	13	HANDLE PIVOT	1216946
3	14	FLATWASHER M8 x 30 x 2	Universal
3	15	ANTIVIBRATION MOUNT ASSEMBLY	458050
3	16	BOLT M8 x 30 + NUT/SPRINGWASHER	Universal
3	17	DEFLECTOR MOUNT CLAMP	451143
3	18	DEFLECTOR CLAMP SCREW	432428
3	19	510 DEFLECTOR ASSEMBLY	451135
3	19	630 DEFLECTOR ASSEMBLY	458068
3	20	MAGURA LEVER FOR CUTTER SPROCKET CABLE	459100
3	25	CUTTER SPROCKET	459035
3	22	CUTTER CABLE GROMMET, NOT SHOWN	2724510
3	21	CUTTER SPROCKET CABLE	1459035





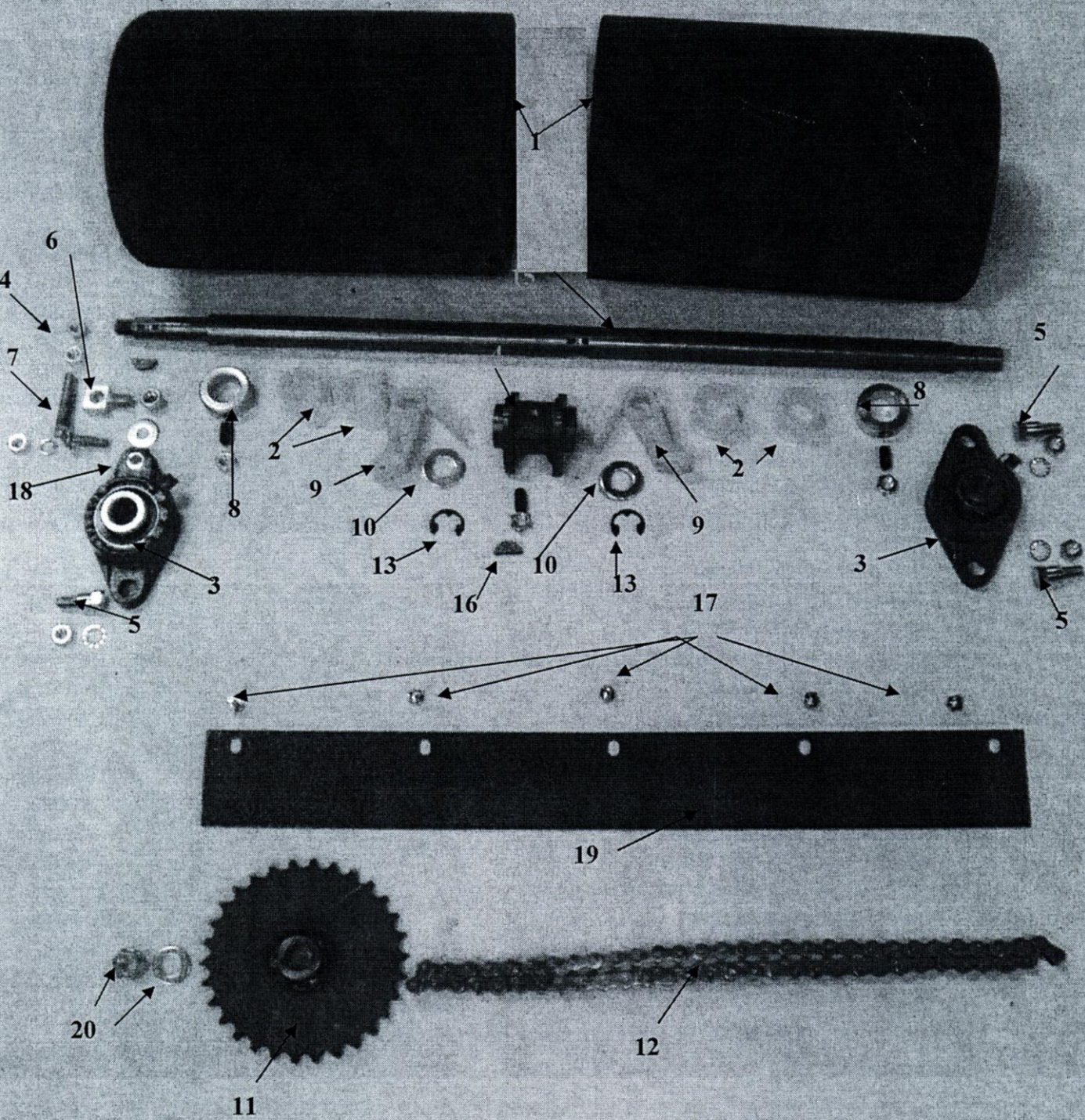


# GOLF CUTTER ASSY

	ILLUS N	DESCRIPTIONS	PART NO
4	1	510 CUTTING CYLINDER X 12 BLADED	459008
4	1	630 CUTTING CYLINDER X 12 BLADED	459160
4	1	630 CUTTING CYLINDER X 9 BLADED	459161
4	2	CUTTING CYLINDER CHAIN 9T./26T. 3/8" CHAIN - 06B-82 ROWER	2984591
4	3	CUTTING CYLINDER FLANGE BEARING UCLF 204-12-19	1129100
4	4	CUTTING CYLINDER SPRING LH	457305
4	5	CUTTING CYLINDER SPRING RH	457306
4	6	CUTTING CYLINDER ADJUSTER BLOCK c/w SCREW + M8 NUT	457300
4	7	BUSH	3115997
4	8	CUTTING CYLINDER SPROCKET	459003
4	9	SPINDLE SLEEVE	459006
4	10	SPRING SLEEVE	459000
4	11	SPRING SOCKET	459020
4	12	SPRING CAP	459030
4	13	510 FRONT ROLLER + 3/8 UNF NUT	451048
4	13	630 FRONT ROLLER + 3/8 UNF NUT	458098
4	14	CUTTER BEARING HOUSING PIVOT BOLT (BACK) +M8 NUT/SPRINGWASHER	457301
4	15	CUTTER BEARING HOUSING CLAMPING BOLT (FRONT) +M8 NUT	457302
4	16	SETTING GAUGE	303028
4	17	510 BOTTOM BLADE (7 HOLES) LC	392041
4	17	630 BOTTOM BLADE LC	458092
4	18	BOTTOM BLADE SCREWS	2071924
4	19	510 GOLF SOLE PLATE	459459
4	19	630 GOLF SOLE PLATE	459461
4	25	ADJUSTER LH	459200
4	26	ADJUSTER RH	459201
4	27	510 WIEHLE FRONT ROLLER	5306086
4	27	630 WEIHLE FRONT ROLLER	5306088
4	28	SPRING BOLT WITH M8 NUT	453261
4	29	SOLEPLATE BOLTS M8 X 25 NUT + SPRINGWASHER	Universal
4	30	WEIHLE ROLLER BEARING (6002 ) +OILSEAL 30 X 15 X 7	Universal
4	31	M8 X 25 BUTTON HEAD SCREW (SPRING CAP)	Universal
4	32	DISENGAGEMENT FORK	459010
4	33	M8 X20 BUTTON HEAD SCREW (DISENGAGEMENT FORK)	Universal
4	34	FORK BRACKET	459025
4	35	510 TEASING RAKE BRACKET	458109
4	35	630 TEASING RAKE BRACKET	458108
4	36	M6 X CUP SQUARE + NUT (TEASING RAKE)	Universal
4	37	510 TEASING RAKE BRUSH	458141
4	37	630 TEASING RAKE BRUSH	458142
4	38	M6X 25 CSK SCREWS (TEASING RAKE BRUSH)	Universal

PLEASE NOTE: SEE FIG 7 FOR HEIGHT + CHAIN ADJUSTER





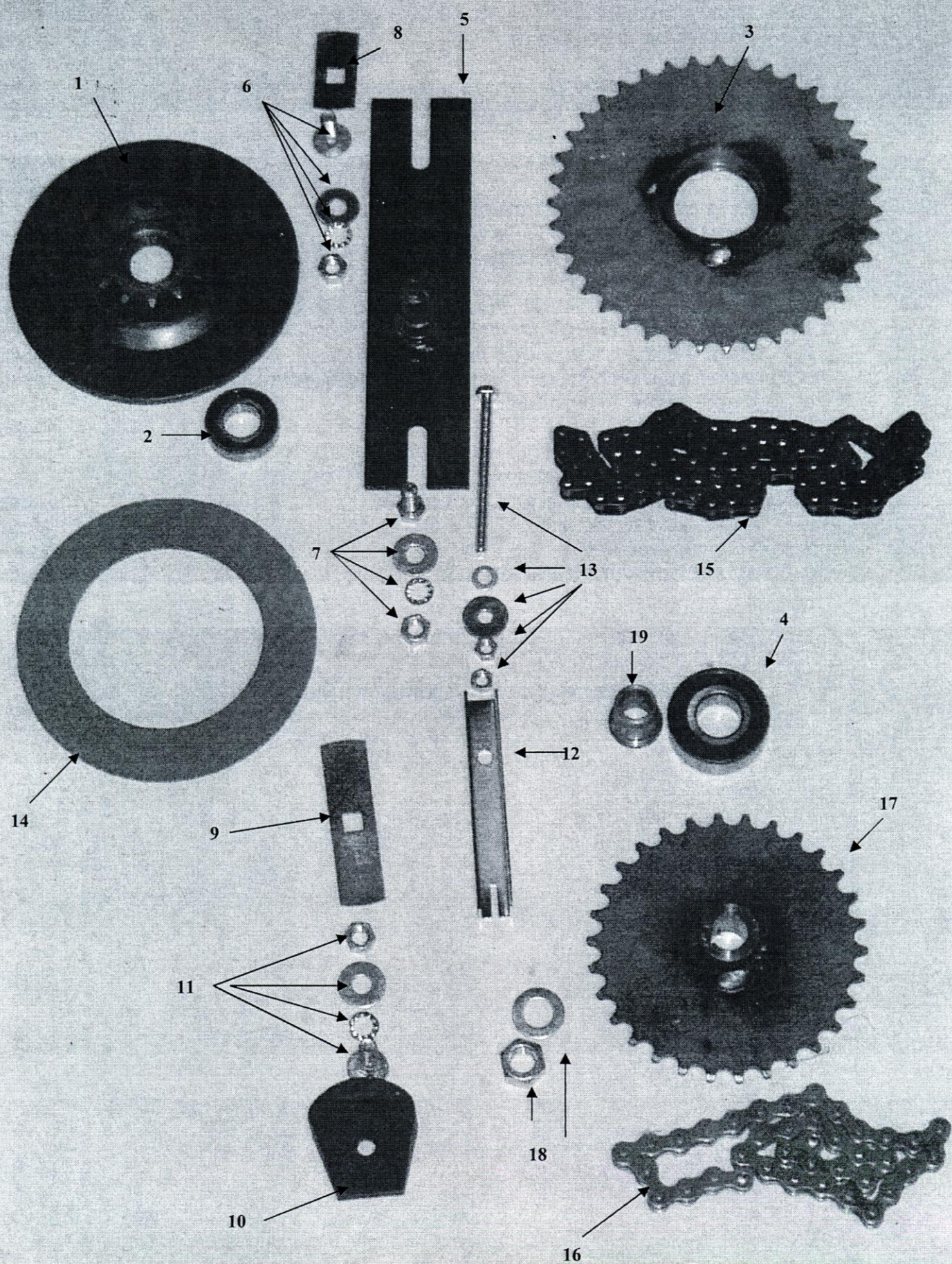


## GOLF REAR DRUMS

FIG	ILLUS NO	DESCRIPTIONS	PART NO
5	1	510 DRUM BUSHED: SMOOTH 176Ø	459150
5	1	630 DRUMS: SMOOTH 176Ø	459155
5	2	DRUM BUSHES	H.D.3115997
5	3	DRUM BEARING UCLF 203-17	1129110
5	4	RATCHET	459198
5	5	DRUM BEARING HOUSING PIVOT BOLT/NUT/SPRINGS/WASHES	457301
5	6	PURCHASE BLOCK + 3/8 UNF NYLOC NUT	BG/301727
5	7	DRUM ADJUSTER BOLT + M8 NUT/SPRING WASHER	457304
5	8	DRUM COLLAR +M8 X 20 GRUB SCREW + M8 LOCK NUT	ROT/201404
5	9	DRUM PAWL	458001
5	10	PAWL WASHER M14 BRIGHT FLAT, STAINLESS STEEL	3651247
5	11	DRUM SPROCKET	451208
5	12	DRUM CHAIN 1/2-083-40 ROLLERS	2984592
5	13	PAWL CIRCLIP M14 EXT	1502474
5	14	DRUM SHAFT NUT M12 (WITHOUT TRANSPORTER WHEELS) OPTIONAL	Universal
5	15	510 DRUM SHAFT (WITHOUT TRANSPORTER WHEELS) OPTIONAL	459005
5	15	510 DRUMSHAFTS FOR TRANSPORTER WHEELS	459226
5	15	630 DRUM SHAFT (WITHOUT TRANSPORTER WHEELS) OPTIONAL	459165
5	15	630 DRUM SHAFT FORTRANSPORTER WHEELS	459228
5	16	WOODRUF KEY	3802051
5	17	REAR ROLLER SCRAPER BOLT M6 X 15 + NUT	Universal
5	18	SPACER: REAR ROLLER BEARING	458015
5	19	510 REAR ROLLER SCRAPER	458071
5	19	630 REAR ROLLER SCRAPER	458070
5	20	M 12 NUT + WASHER	Universal
5	21	510 KICKDOWN STAND (NOT SHOWN)	459230

**PLEASE NOTE: SEE FIG.8 FOR TRANSPORTER WHEELS**



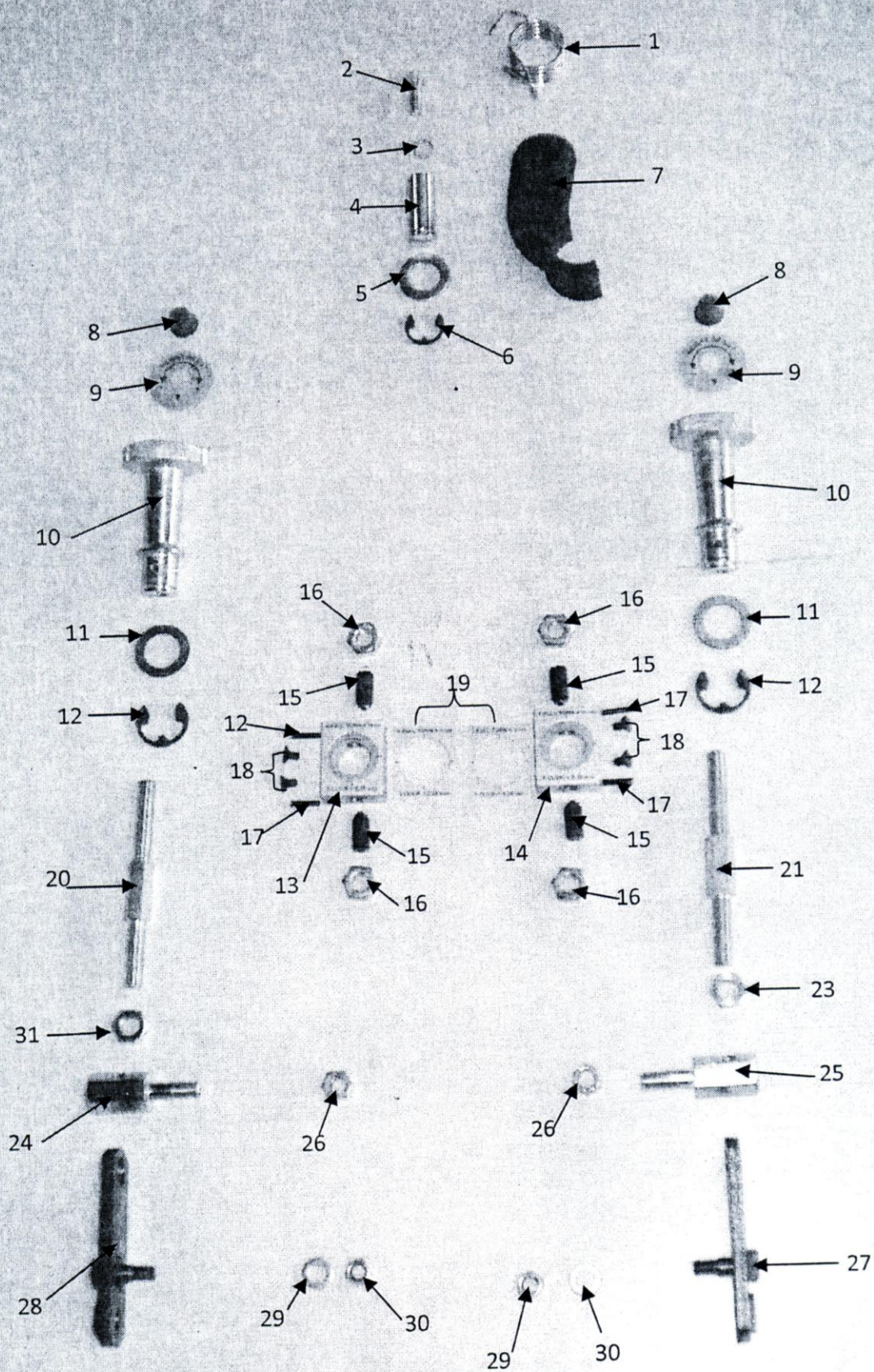




# GOLF TRANSMISION

FIG	ILLUS NO	DESCRIPTIONS	PART NO
6	1	SMALL INTER SPROCKET ASSY 13T	451233
6	2	SMALL INTER SPROCKET BEARING 6003	1126037
6	3	LARGE INTER SPROCKET ASSY 41T	454779
6	4	LARGE INTER SPROCKET BEARING 6202	1122422
6	5	INTER ADJUSTMENT BRACKET ASSY	451215
6	6	CUP SQUARE BOLT/NUT/WASHER M8 X 20	Universal
6	7	M8 X 20 BOLT/WASHER/NUT/SPRING WASHER	Universal
6	9	SLOT COVER: BOTTOM	458200
6	10	CHAIN ADJUSTER SLIDE	455770
6	11	CUP SQUARE BOLT/NUT/WASHER M8 X 30	Universal
6	12	OPERATING LEVER RELEASE	453560
6	13	CLUTCH OPERATING BOLT/NUT/WASHER/LOCKNUT M6 X 50	1215863
6	14	LINING	333032
6	15	CLUTCH/CUTTER CHAIN 12T/41T. ½ - 083, 62 ROLLER	2981591
6	16	CLUTCH/DRUM 13T/30T - 083, 40 ROLLERS	2984592
6	17	DRUM SPROCKET, L.H THREAD	451208
6	18	NUT/WASHER M12	Universal
6	19	SLEEVE CLUTCH WITH SHEAR PIN	454790
6	20	CHAIN ADJUSTER PIN (NOT SHOWN)	459130
6	21	CHAIN ADJUSTER SPRING (NOT SHOWN)	459131



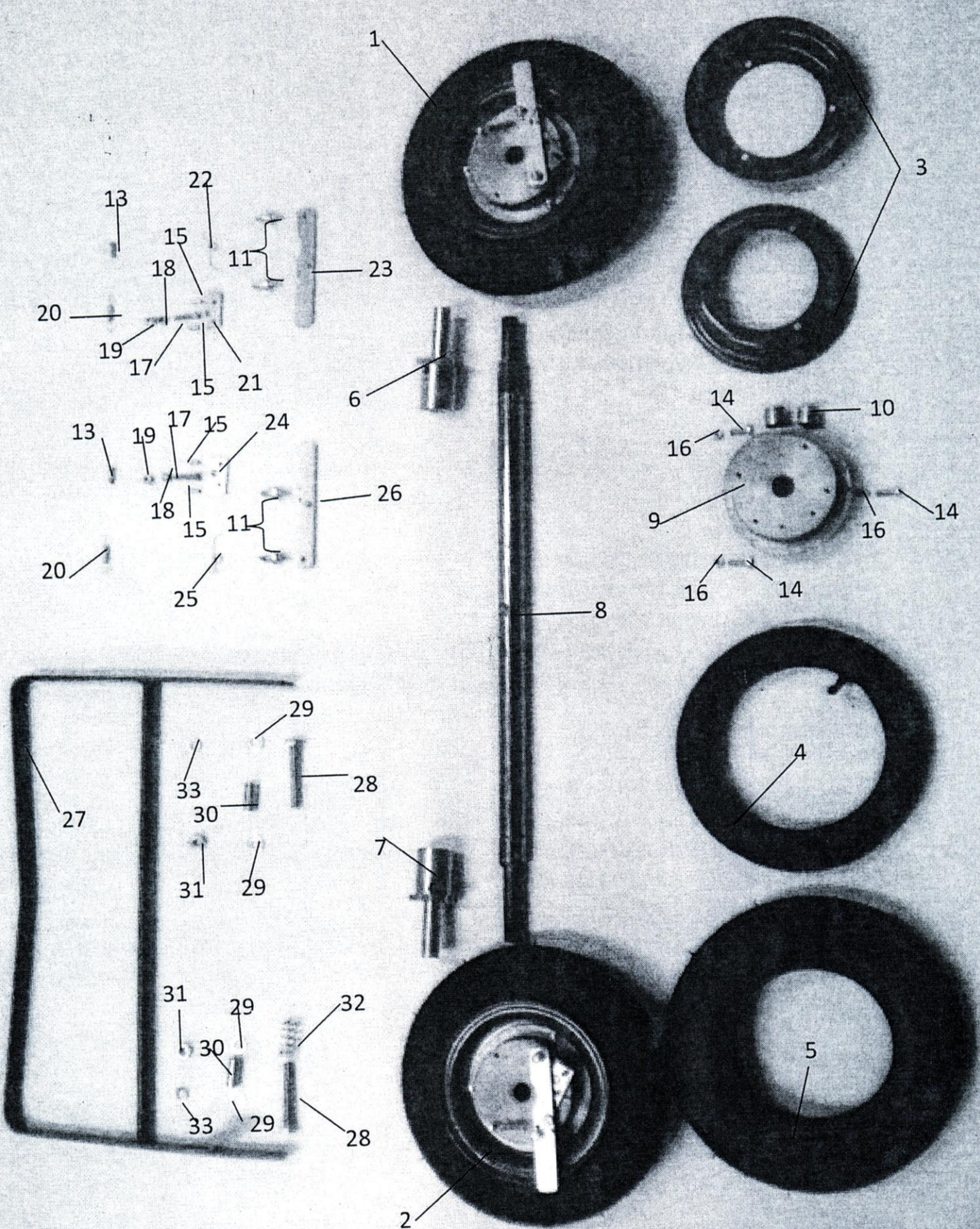




## MK2 NEW HEIGHT ADJUSTER & CHAIN TENSIONER

ILLUS NO	DESCRIPTION	PART NO
7 1	CHAIN TENSIONER SPRING	459131
7 2	M8 x 20 SET SCREW	Universal
7 3	M8 SPRING WASHER	Universal
7 4	CHAIN TENSIONER PIN	459130
7 5	M17 x 30 x 1.6 FLAT WASHER	Universal
7 6	CIRCLIP	1502474
7 7	CHAIN TENSIONER	455770
7 8	ADJUSTER KNOB DUST CAP	2721960
7 9	ADJUSTER KNOB LABEL	2721961
7 10	FRONT ROLLER ADJUSTER KNOB	454695
7 11	SHIM WASHER	459210
7 12	CIRCLIP	454723
7 13	HEIGHT ADJUSTER BLOCK R.H.	455698.2
7 14	HEIGHT ADJUSTER BLOCK L.H.	455705.2
7 15	M10 SPRING PLUNGER	459045
7 16	M10 NUT	Universal
7 17	M3 x 16 SELLOK PIN	Universal
7 18	M4 x 8 COUNTER SUNK. SCREW	Universal
7 19	ADJUSTER BLOCK LABEL	2721962
7 20	FRONT ROLLER ADJUSTER ROD R.H. (3/8" UNF RH THREAD)	454680
7 21	FRONT ROLLER ADJUSTER ROD L.H. (M10 LH THREAD)	454681
7 22	3/8 UNF NUT	Universal
7 23	LH LOCKNUT (M10 LH)	459190
7 24	ADJUSTER ROD PIVOT R.H. (3/8" UNF R.H.)	459050
7 25	ADJUSTER ROD PIVOT L.H. (M10 LH THREADED)	459051
7 26	3/8 UNF LOCKNUT	Universal
7 27	DOUBLE ADJUSTER RH	459201
7 28	DOUBLE ADJUSTER LH	459200
7 29	M8 FLAT WASHER	Universal
7 30	M8 NYLOC NUT	Universal
7 31	3/8 UNF NUT	Universal







## WHEEL ASSY

S NO	DESCRIPTION	PART NO
1	LH WHEEL ASSY	174879
2	RH WHEEL ASSY	174887
3	WHEEL	174924
4	TUBE 2.50 X 6"	3051030
5	TYRE 2.50 X 6"	3061062
6	L.H TRANSPORTER AXLE	654610
7	R.H. TRANSPORTER AXLE	654629
8	20" DRUM SHAFT TRANSPORTER	654590
8	25" DRUM SHAFT TRANSPORTER	655226
9	WHEEL HUB	174895
10	BUSH	3111074
11	RELEASE LEVER PIVOT PIN	174959
12	NYLOC NUT ¼" UNF	Universal
13	RELEASE SPRING PIN	174975
14	HEX SETSCREW ¼" UNF X ¾"	Universal
15	SPRING PIN 3/16" X ½" LONG	Universal
16	HEX NUT ¼" UNF	Universal
17	PAWL SCREW	175020
18	PAWL SCREW SPACER	175038
19	HEX NUT ¼" BSW	Universal
20	RELEASE LEVER SPRING	174967
21	LH PAWL ASSY	174983
22	LH PAWL SPRING	175046
23	LH RELEASE LEVER ASSY	174908
24	RH PAWL ASSY	174991
25	RH PAWL ASSY	175054
26	RH RELEASE LEVER ASSY	174916
27	DRUM SHAFT SPROCKET (TRANSPORTER)	655381
28	DRUM SHAFT SPROCKET SPACER (L.H.)	655157
29	KICKDOWN STAND CATCH	459223
30	R.H FRAME LINK	459220
31	M8 X 20 BOLTS + NYLOCK NUTS (2 x) + WASHER	STD
32	M8 X 20 SPRING BOLT + NYLOCK NUTS	STD
33	PIVOT BOLT + M8 NYLOCK NUT	453261
34	20" KICK DOWN STAND	459230
34	25" KICK DOWN STAND	459232
35	KICK DOWN STAND SPRING	174967
36	KICK DOWN STAND CATCH BOLT 8 x 20 + NYLOCK NUT + WASHER	STD
37	KICK DOWN STAND CATCH	459223