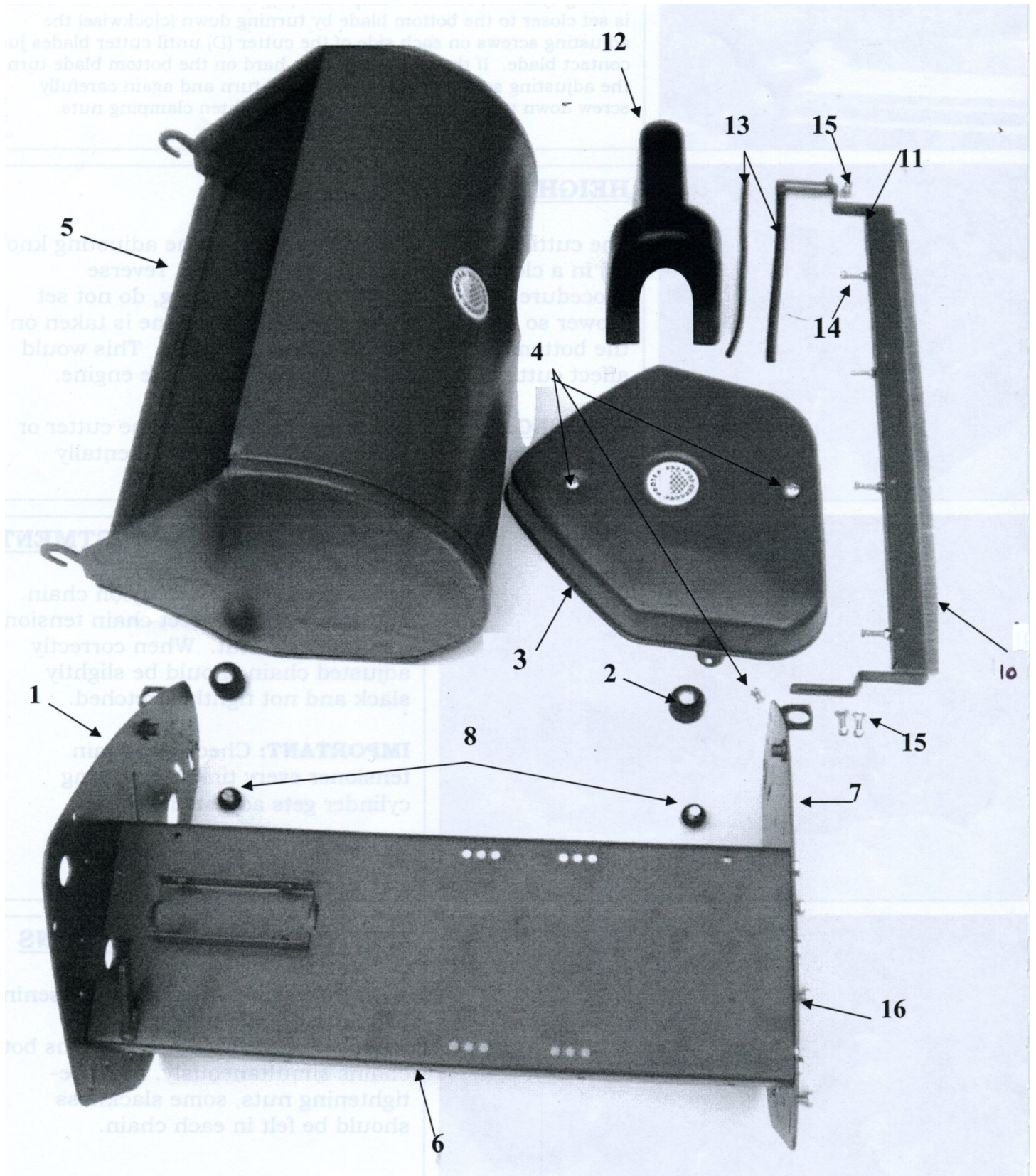


## PROTEA DOMESTIC MODEL PARTS LISTING

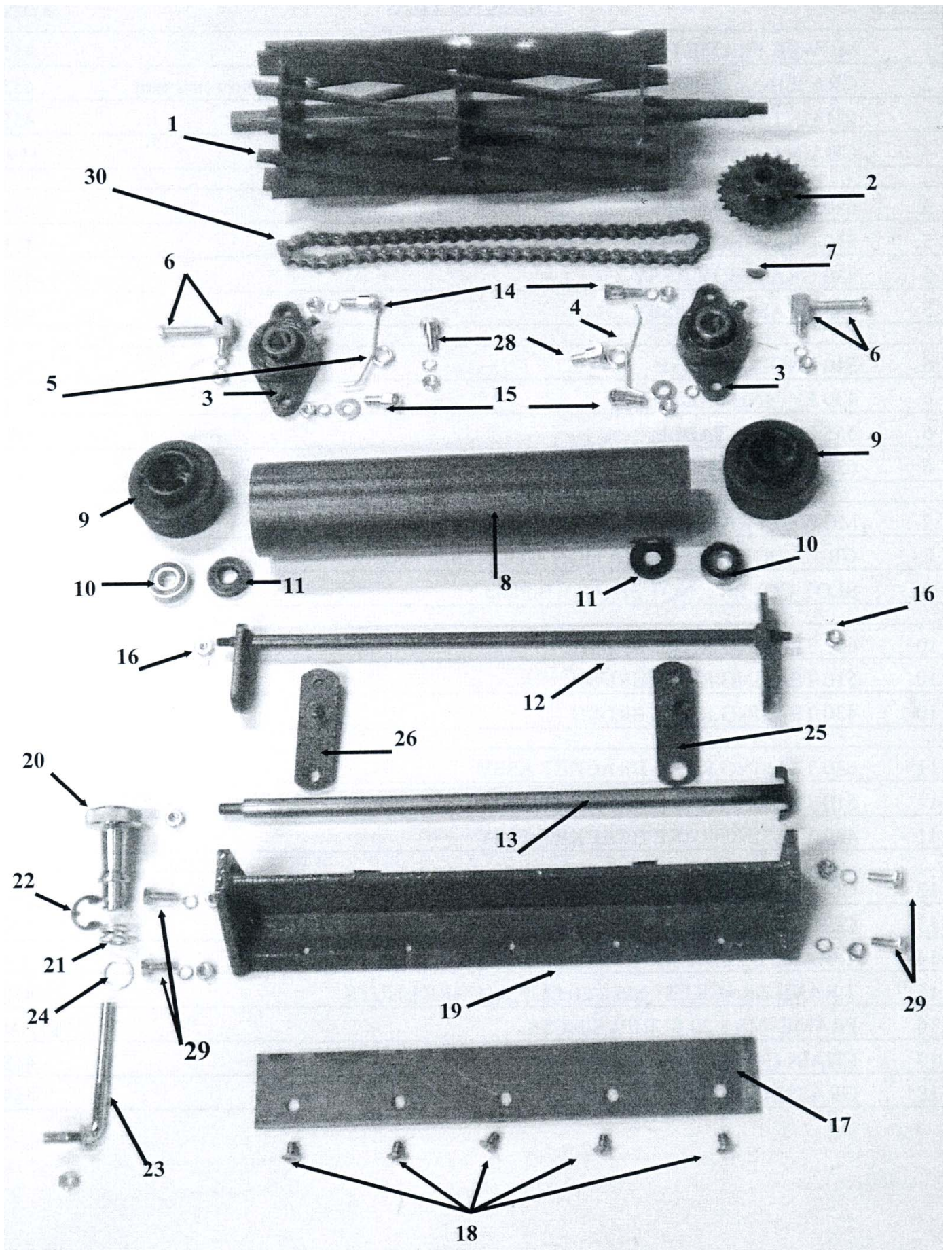




## SECTION 1 (REFER FIG.1)

<u>ILLUS NO</u>	<u>DESCRIPTION</u>	<u>PART NO</u>
1	MOWER FRAME LH	455697
2	GRASSBOX SUPPORT RUBBER WITH M8 x 30 CUP SQUARE/NUT (AS FROM 01/08/2007)	453085
3	CHAIN COVER	455777
4	CHAIN CASE MOUNTING SCREWS + M6 x 10 BOLTS/NUTS	1191908
5	630 GRASSBOX ASSY	458065
5	510 GRASSBOX ASSY	451290
5	430 GRASSBOX ASSY	454459
5	355 GRASSBOX ASSY	458021
6	510 ENGINE TABLE	451338
6	430 ENGINE TABLE	451520
6	355 ENGINE TABLE	455521
6	630 ENGINE TABLE	458056
7	MOWER FRAME RH	455700
8	GRASSBOX ANTIVIBRATION MOUNTS	458085
9	SLOT COVER : NOT SHOWN Bottom	458080
10	630 TEASING RAKE BRUSH	458142
10	510 TEASING RAKE BRUSH	458141
10	430 TEASING RAKE BRUSH	458140
11	630 TEASING RAKE BRACKET ASSY	458108
11	510 TEASING RAKE BRACKET ASSY	458109
11	430 TEASING RAKE BRACKET ASSY	458110
12	CLUTCH COVER: Export Only	350050
13	CLUTCH COVER SEAL: Export Only	458150
14	T. RAKE BRUSH M6 x 25 C.S.K SCREWS/NUTS	STANDARD
15	T.RAKE BRACKET M6 x 20 CUP SQUARES/NUTS	458302
16	FRAME M8 x 20 SCREWS/NUTS	STANDARD
17	CHAIN COVER STUD (NOT SHOWN)	458170
18	GRASSBOX HANDLE : OPTIONAL - NOT SHOWN	459270

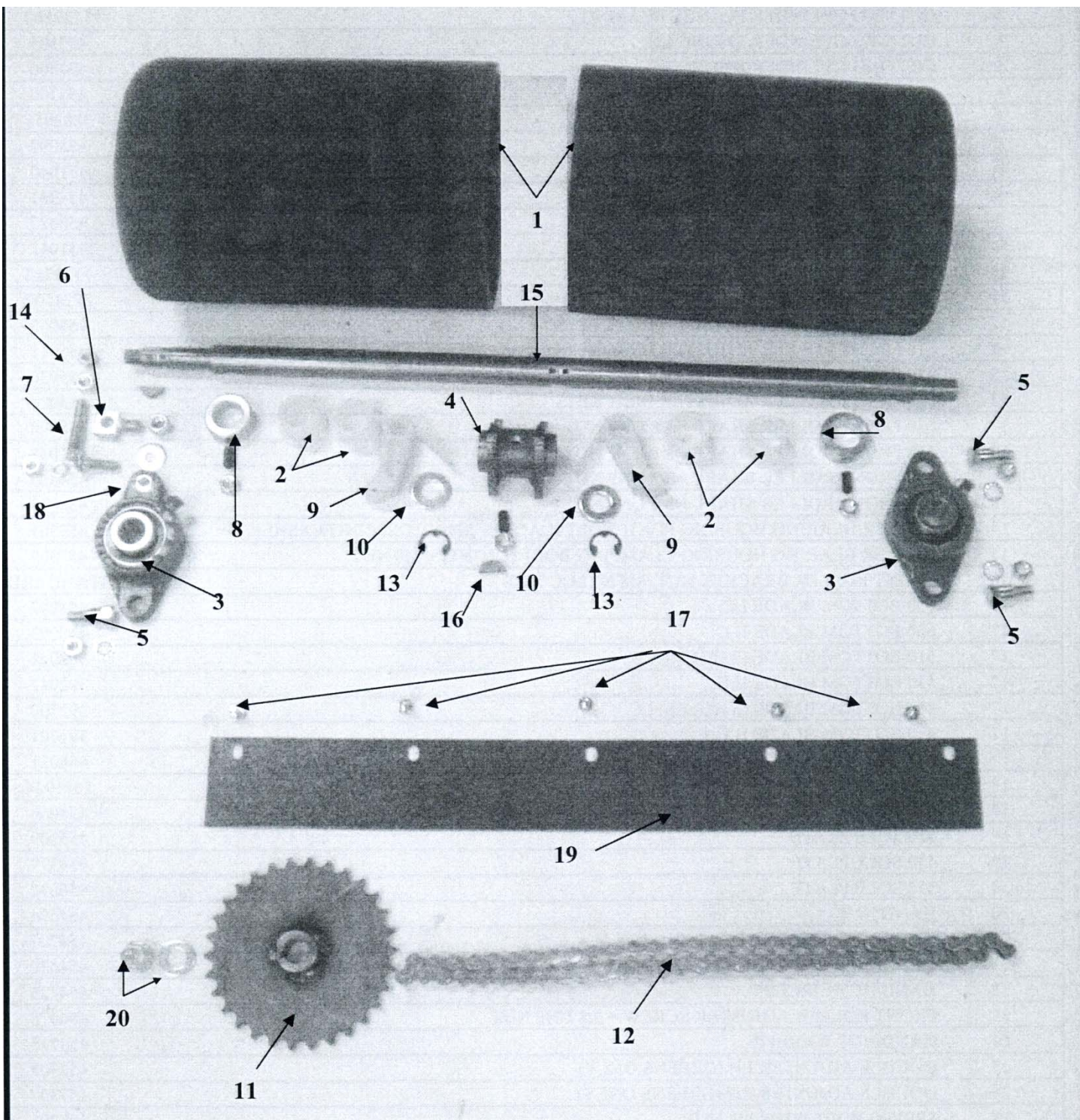






1	630 CUTTING CYLINDER x 12 BLADED	458077
1	630 CUTTING CYLINDER x 6 BLADED	458075
1	630 CUTTING CYLINDER x 9 BLADED	458076
1	510 CUTTING CYLINDER x 6 BLADED	456251
1	510 CUTTING CYLINDER x 9 BLADED	456253
1	510 CUTTING CYLINDER x 12 BLADED	456252
1	430 CUTTING CYLINDER x 6 BLADED	456351
1	430 CUTTING CYLINDER x 9 BLADED	456353
1	430 CUTTING CYLINDER x 12 BLADED	456352
1	355 CUTTING CYLINDER x 6 BLADED	458025
2	CUTTING CYLINDER SPROCKET	451485
3	CUTTING CYLINDER FLANGE BEARING	1129100
4	CUTTING CYLINDER SPRING LH	457305
5	CUTTING CYLINDER SPRING RH	457306
6	CUTTING CYLINDER ADJUSTER BLOCK c/w SCREW + M8 NUT	457300
7	WOODRUF KEY	3802051
8	630 FRONT ROLLER TUBE	458097
8	510 FRONT ROLLER TUBE	451040
8	430 FRONT ROLLER TUBE	454281
8	355 FRONT ROLLER TUBE	458022
9	FRONT ROLLER END CAP	451042
10	FRONT ROLLER BEARINGS 6202	1122222
11	FRONT ROLLER SEALS (35x15x7)	2724500
12	630 FRONT ROLLER ADJUSTER BRACKETS	458063
12	510 FRONT ROLLER ADJUSTER BRACKETS	455911
12	430 FRONT ROLLER ADJUSTER BRACKETS	455930
12	355 FRONT ROLLER ADJUSTER BRACKETS	458024
13	630 FRONT ROLLER SHAFT + 3/8 UNF NUT	458098
13	510 FRONT ROLLER SHAFT + 3/8 UNF NUT	451048
13	430 FRONT ROLLER SHAFT + 3/8 UNF NUT	454303
13	355 FRONT ROLLER SHAFT + 3/8 UNF NUT	458030
14	CUTTER BEARING HOUSING PIVOT BOLT (BACK) + M8 NUT/SPRINGWASHER	457301
15	CUTTER BEARING HOUSING CLAMPING BOLT (FRONT) + M8 NUT	457302
16	FRONT ROLLER BRACKET NUT M8 NYLOC NUT	STANDARD
17	630 BOTTOM BLADE LC	458092
17	630 BOTTOM BLADE H.C.	458093
17	510 BOTTOM BLADE (7 HOLES) LC	392041
17	510 BOTTOM BLADE H.C.	392042
17	430 BOTTOM BLADE (6 HOLES) LC	391700
17	430 BOTTOM BLADE H.C.	391701
17	355 BOTTOM BLADE (5HOLES)	458031
18	BOTTOM BLADE SCREWS	2071924
19	630 SOLE PLATE	458060
19	510 SOLE PLATE	453309
19	430 SOLE PLATE	454379
19	355 SOLE PLATE	458032
20	HAND NUT	454694
21	HAND NUT SPRING	454707
21	ALT. HAND NUT SPACER (ENGLAND)	454670
22	HAND NUT CIRCLIP	454723
23	FRONT ROLLER ADJUSTER SCREW + 3/8 UNF NUT	454678
24	HAND NUT WASHER	454715
25	DOUBLE ADJUSTER LH (GREENS ONLY)	457303
26	DOUBLE ADJUSTER RH (GREENS ONLY)	457307
28	SPRING BOLT WITH M8 NUT	453261
29	SOLEPLATE BOLTS M8 x 25 NUT + SPRINGWASHER	
30	CHAIN 3/8 x 3/16 x .305 ROLLER ENGINE TO CUTTER FOR 12T SPROCKET + 9T Groomer : 80 Rollers	2984500
30	CHAIN 3/8 x 3/16 x .305 ROLLER ENGINE TO CUTTER FOR 9T SPROCKET : 78 Rollers	2984810
30	CHAIN 3/8 x 3/16 x .305 ROLLER CUTTER/CLUTCH FOR GROOMER (9T)	2984501
31	510G FRONT ROLLER WIRE SCRAPER (NOT SHOWN)	659538
32	630G FRONT ROLLER WIRE SCRAPER (NOT SHOWN)	459125

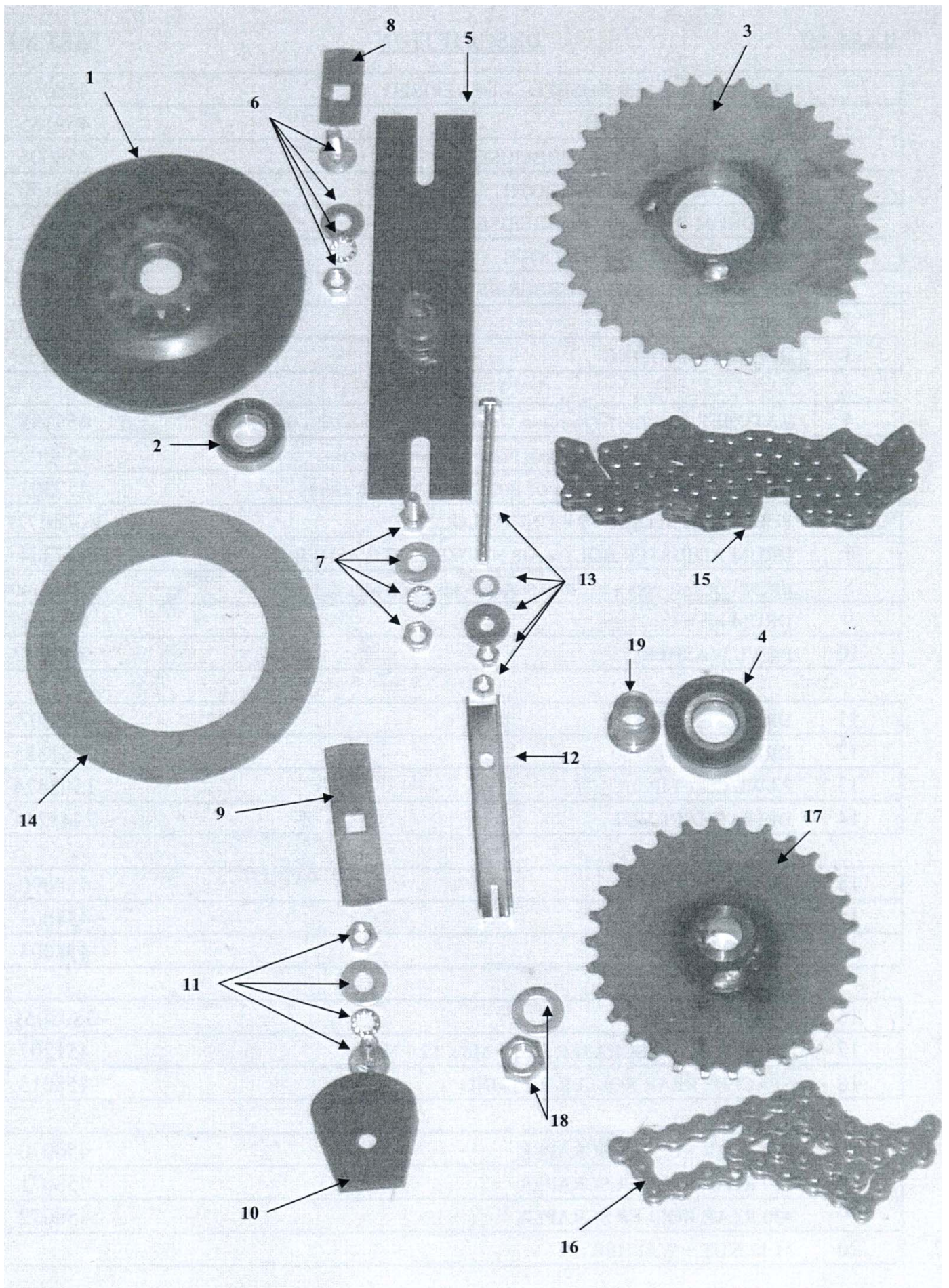






<u>US NO</u>	<u>DESCRIPTION</u>	<u>PART NO</u>
1	630 REAR ROLLER BUSHED : RUBBERISED	458055
1	630 DRUMS: SMOOTH	459155
1	510 DRUM BUSHED : RUBBERISED	458006
1	510 DRUM BUSHED : SMOOTH	459150
1	430 DRUM BUSHED : RUBBERISED	458007
1	430 DRUM BUSHED : SMOOTH	458167
1	355 DRUM BUSHED : RUBBERISED	458013
2	DRUM BUSHES	458000
3	BEARING HOUSING	1129110
4	RATCHET : New Type For Back Drum 175dia (Smooth Steel Drum Only) As From 2008	459198
4	RATCHET : Old Type For Back Drum 165dia (Rubberised Drum Only)	458002
5	DRUM BEARING HOUSING PIVOT BOLT/NUT/SPRING WASHES	457301
6	PURCHASE BLOCK + 3/8 UNF NYLOC NUT	BG/301727
7	DRUM ADJUSTER BOLT + M8 NUT/SPRING WASHER	457304
8	DRUM COLLAR + M8 x 20 GRUB SCREW + M8 LOCK NUT	ROT/201404
9	DRUM PAWL	458001
10	PAWL WASHER	3651247
11	DRUM SPROCKET	451207
12	DRUM CHAIN	2981385
13	PAWL CIRCLIP	1502474
14	DRUM SHAFT NUT	2441244
15	630 DRUM SHAFT	458090
15	510 DRUM SHAFT	458003
15	430 DRUM SHAFT	458004
16	WOODRUF KEY	3802051
17	REAR ROLLER SCRAPER BOLT M6 x 15 + NUT	451207
18	SPACER : REAR ROLLER BEARING	458015
19	630 REAR ROLLER SCRAPER	458070
19	510 REAR ROLLER SCRAPER	458071
19	430 REAR ROLLER SCRAPER	458072
20	M 12 NUT + WASHER	

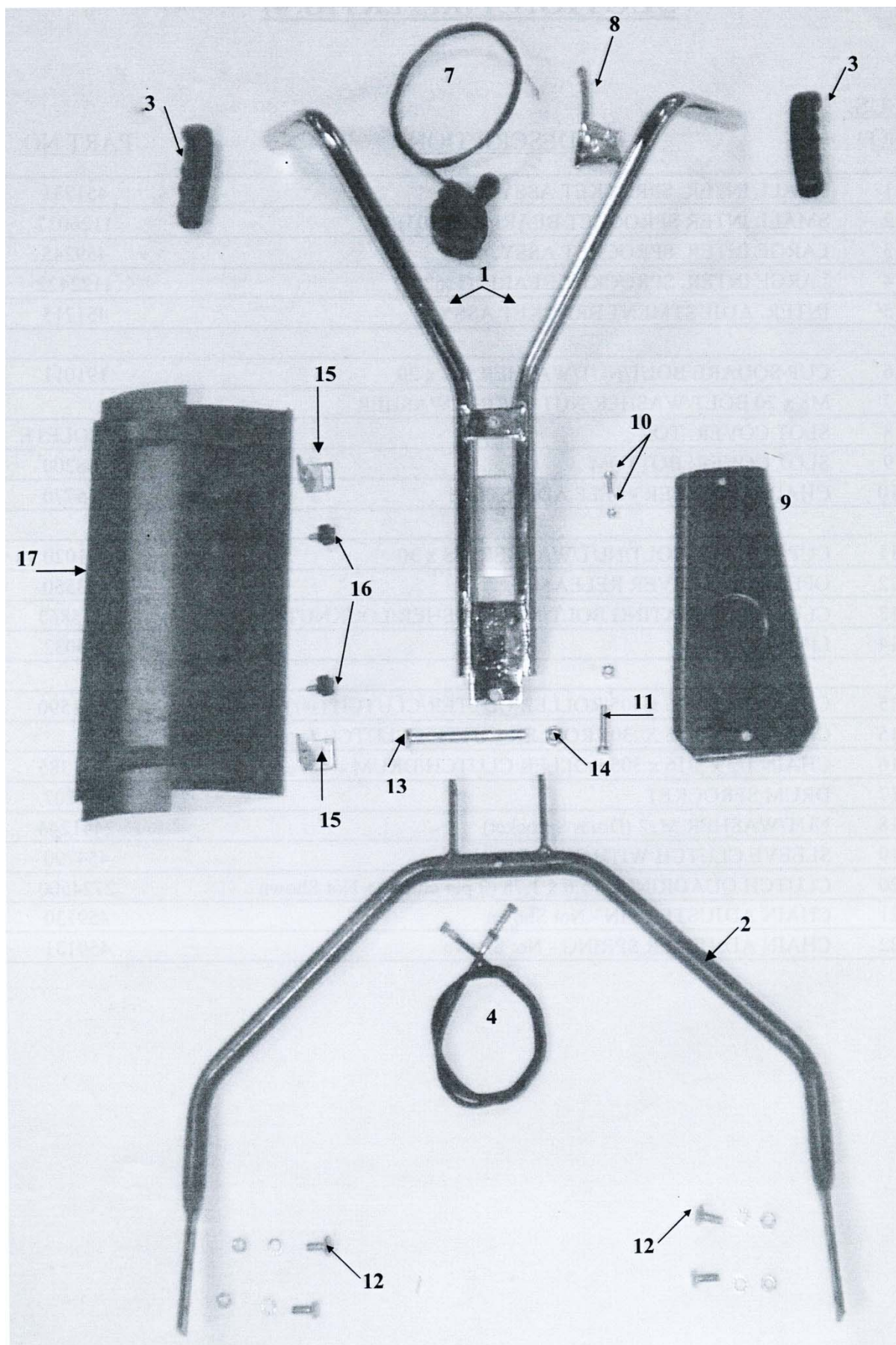






<u>NO</u>	<u>DESCRIPTION</u>	<u>PART NO.</u>
1	SMALL INTER. SPROCKET ASSY.	451231
2	SMALL INTER SPROCKET BEARING (6003)	1126037
3	LARGE INTER. SPROCKET ASSY. 41T	459245
4	LARGE INTER. SPROCKET BEARING (6204)	1122422
5	INTER. ADJUSTMENT BRACKET ASSY.	451215
6	CUP SQUARE BOLT/NUT/WASHER M8 x 20	191011
7	M8 x 20 BOLT/WASHER/NUT/SPRING WASHER	
8	SLOT COVER: TOP	OBSOLETE
9	SLOT COVER: BOTTOM	458200
10	CHAIN ADJUSTER - SELF ADJUSTING	455770
11	CUP SQUARE BOLT/NUT/WASHER M8 x 30	191020
12	OPERATING LEVER RELEASE	453560
13	CLUTCH OPERATING BOLT/NUT/WASHER/LOCKNUT M6 x 50	1215863
14	LINING	333032
15	CHAIN 1/2 x 3/16 x .305 ROLLER CUTTER/CLUTCH (39T) 59 Rollers	2981590
15	CHAIN 1/2 x 3/16 X .305 ROLLER CUTTER/CLUTCH (41T) 60 Rollers + 1/2 link	
16	CHAIN 1/2 x 3/16 x .305 ROLLER CLUTCH/DRUM 41 Rollers	2981385
17	DRUM SPROCKET	451207
18	NUT/WASHER M12 (Drum Sprocket)	2441244
19	SLEEVE CLUTCH WITH SHEAR PIN	454790
20	CLUTCH QUADRINGS 15.6 x 1.78 (2 per clutch) - Not Shown	2724500
21	CHAIN ADJUSTER PIN - Not Shown	459130
22	CHAIN ADJUSTER SPRING - Not Shown	459131

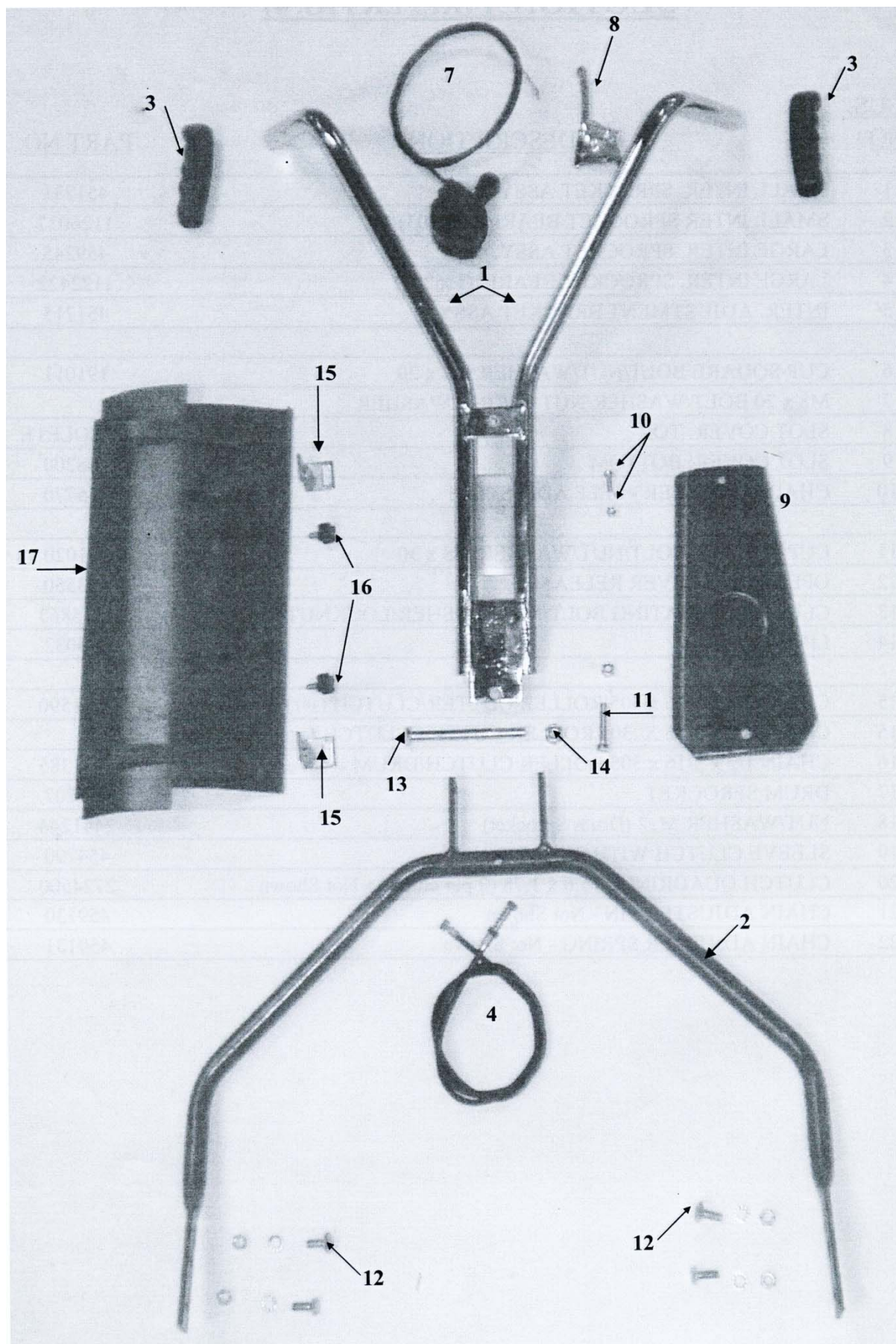






<u>ILLUS. NO</u>	<u>DESCRIPTION</u>	<u>PART NO.</u>
1	UPPER HANDLE ASSY. (Old Type-Bend Type)	456374
1	UPPER HANDLE ASSY. (G) (New Type - Straight Handle)	456375
2	<b>SI630</b> LOWER HANDLE ASSY.	458300
2	<b>SI510</b> LOWER HANDLE ASSY.	456358
2	<b>SI430</b> LOWER HANDLE ASSY.	456366
2	<b>SI355</b> LOWER HANDLE ASSY	458023
3	HANDLE GRIP	1851069
4	CLUTCH WIRE ASSY.	451240
7	THROTTLE WIRE ASSY.	656720
8	CLUTCH LEVER	403010
9	COVER PLATE ASSY.	453739
10	COVER PLATE TOP SCREW & NUT M6 x 15	386046
11	COVER PLATE BOTTOM SCREW & NUT M8 x 40	1213807
12	CUP SQUARE BOLT M8 x 30	458302
13	HANDLE PIVOT BOLT M10 x 110	1216946
14	M10 NYLOC NUT	351222
15	DEFLECTOR MOUNT CLAMP	451143
16	DEFLECTOR CLAMP SCREW	432428
17	<b>SI630</b> DEFLECTOR ASSY.	458068
17	<b>SI510</b> DEFLECTOR ASSY.	451135
17	<b>SI430</b> DEFLECTOR ASSY.	454387
17	<b>SI355</b> DEFLECTOR ASSY.	458020
18	M8x20 SET SCREW	STD
19	SHIM WASHER HANDLE	459457

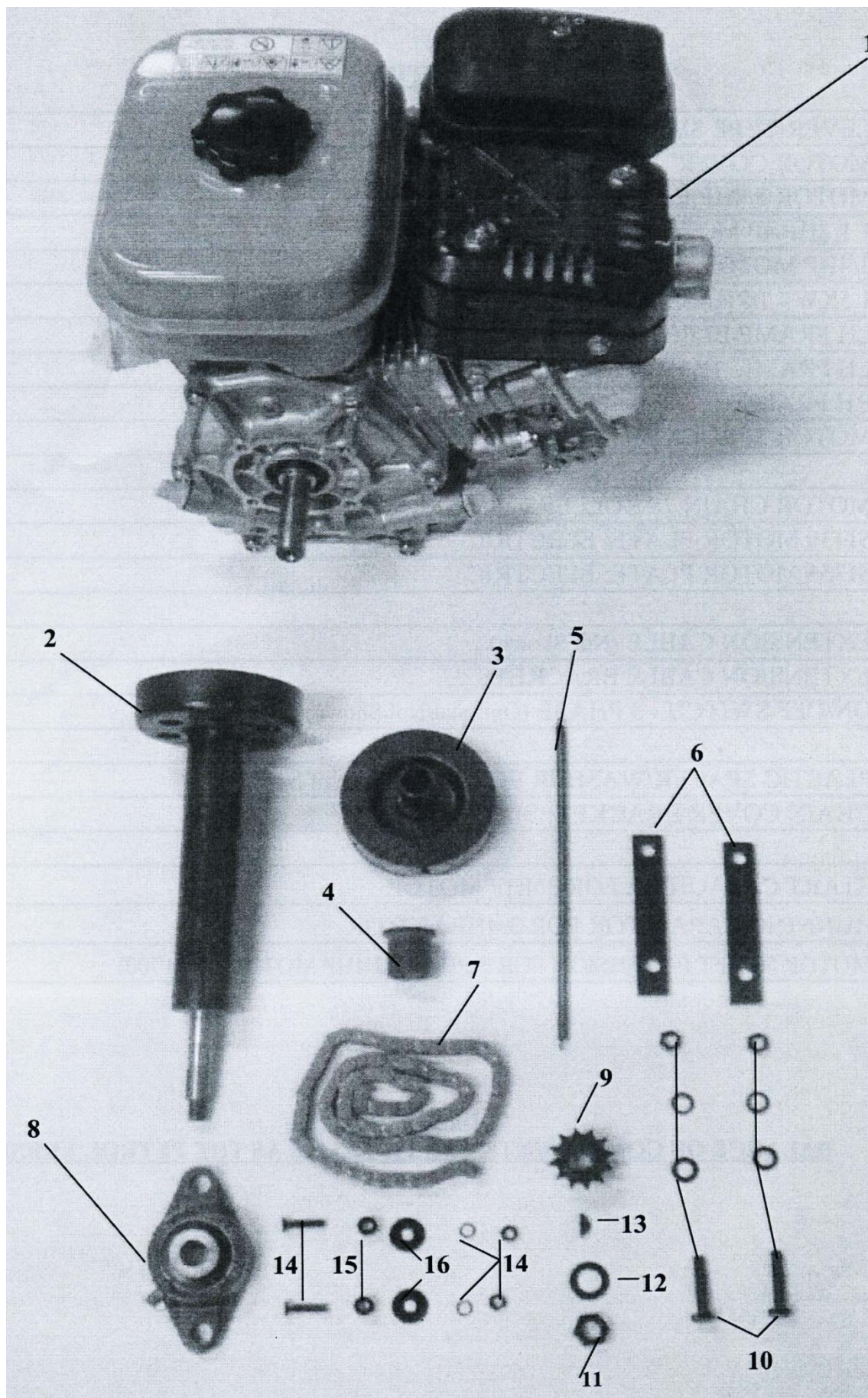






<u>ILLUS. NO</u>	<u>DESCRIPTION</u>	<u>PART NO.</u>
1	UPPER HANDLE ASSY. (Old Type-Bend Type)	456374
1	UPPER HANDLE ASSY. (G) (New Type - Straight Handle)	456375
2	<b>SI630</b> LOWER HANDLE ASSY.	458300
2	<b>SI510</b> LOWER HANDLE ASSY.	456358
2	<b>SI430</b> LOWER HANDLE ASSY.	456366
2	<b>SI355</b> LOWER HANDLE ASSY	458023
3	HANDLE GRIP	1851069
4	CLUTCH WIRE ASSY.	451240
7	THROTTLE WIRE ASSY.	656720
8	CLUTCH LEVER	403010
9	COVER PLATE ASSY.	453739
10	COVER PLATE TOP SCREW & NUT M6 x 15	386046
11	COVER PLATE BOTTOM SCREW & NUT M8 x 40	1213807
12	CUP SQUARE BOLT M8 x 30	458302
13	HANDLE PIVOT BOLT M10 x 110	1216946
14	M10 NYLOC NUT	351222
15	DEFLECTOR MOUNT CLAMP	451143
16	DEFLECTOR CLAMP SCREW	432428
17	<b>SI630</b> DEFLECTOR ASSY.	458068
17	<b>SI510</b> DEFLECTOR ASSY.	451135
17	<b>SI430</b> DEFLECTOR ASSY.	454387
17	<b>SI355</b> DEFLECTOR ASSY.	458020
18	M8x20 SET SCREW	STD
19	SHIM WASHER HANDLE	459457







**ILLUS****NO****DESCRIPTION****PART NO**

1	Engine 4 1/2 HP	6200050
1	Engine 3 1/2 HP	6200302
2	Centrifugal Clutch Shaft: <b>430/510/630</b> for 9T Sprocket	458168
2	Centrifugal Clutch Shaft : <b>355</b> for 9T Sprocket	458169
3	Centrifugal Clutch Body with Spring	6200450
4	Centrifugal Clutch Shaft Oil Lite Bush	H.D 3115997
5	Centrifugal Clutch Tension Spring	458040
6	Engine Packing : Only Robin EY20	458102
7	Cutter Chain 3/8" for 9T Sprocket - 78 Rollers 06B	2984810
8	Pillow Block	1121200
9	Clutch Sprocket 9T (As from February 2006 on Centrifugal Clutch)	453989
9	Clutch Sprocket 11T Threaded (Optional)	453992
10	Hex Bolt M8 x 45	
11	Nut 1/2" UNF for 12T Sprocket , 3/8" UNF for 8T Sprocket	
12	M12 Washer	
13	Woodruf Key No.6	3802051
14	M6 x 25 Counter Sunk Screws	
15	Pillow Block Spacing	458048
16	M6 x 22 x 2 Flat Washer	